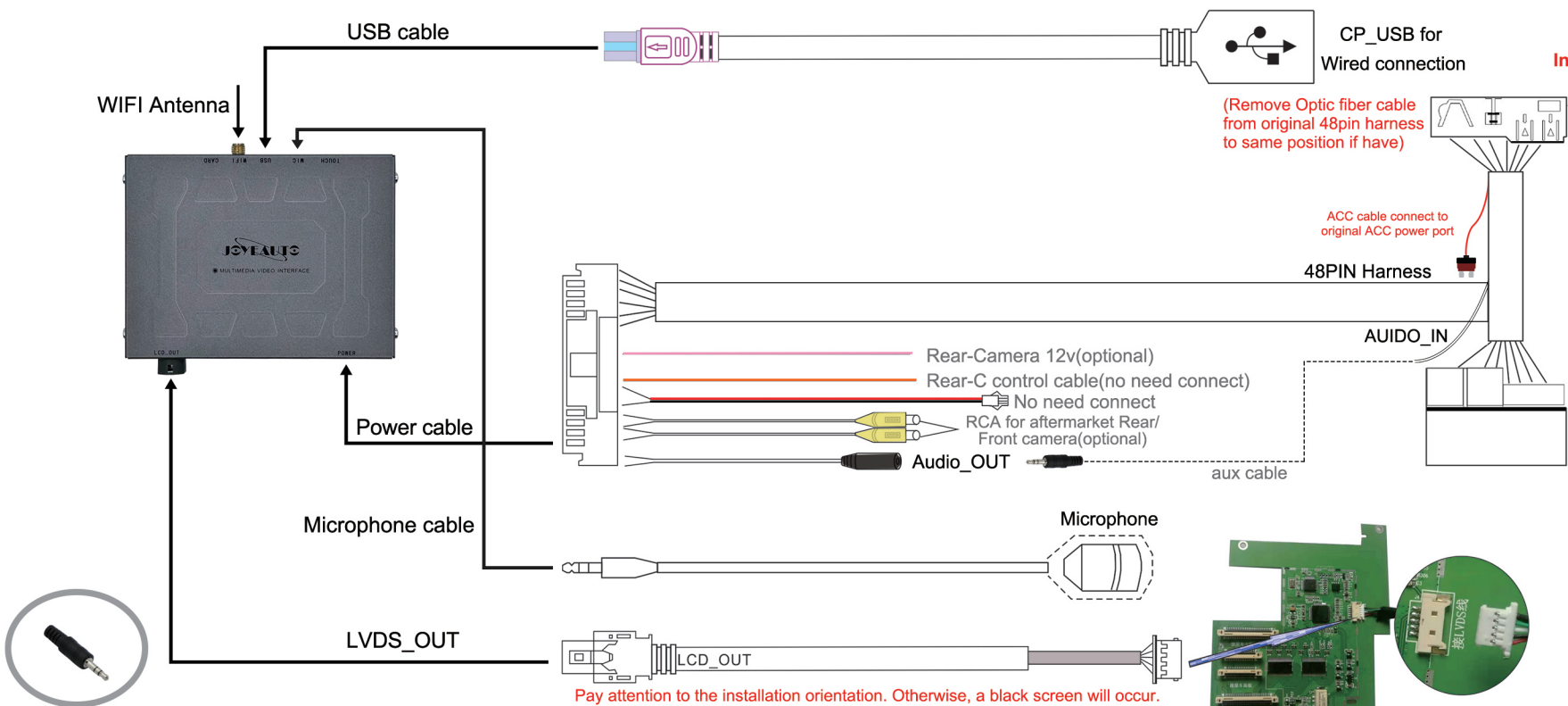


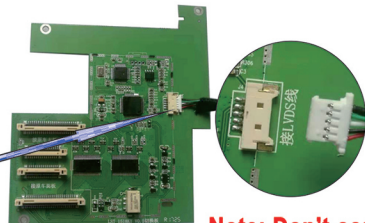
Porsche PCM3.1 Wireless CarPlay Installation Diagram



WZPO-1
Installation Video



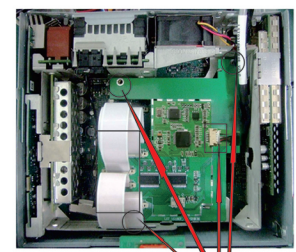
AUX adapter connect to aux port from armrest box



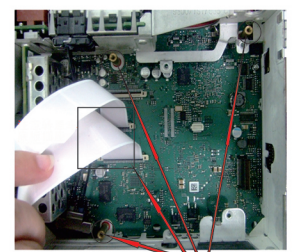
Note: Don't connect reverse

Dip Switch	Status	Description
2	ON	Touch correction
	OFF	OFF after correction
4	ON	Reverse guideline OFF
	OFF	Reverse guideline ON
8	ON	Original Rear Camera
	OFF	Aftermarket Rear Camera

1,3, 5,6, 7 all set OFF.



2, sub-board installation. connect well with 2PCS FPC and LVDS cable.



3, unscrew these three screws, and install three copper post. and then convert well with 2 FPC cable(30P/50P).

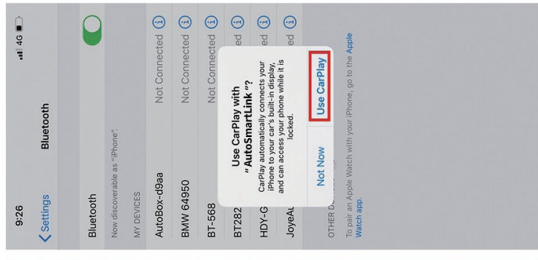
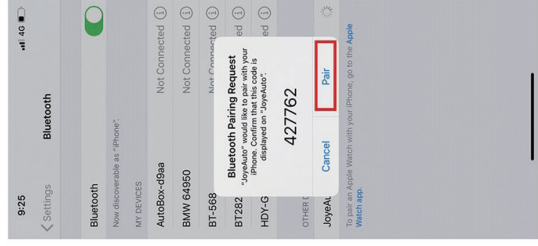
How to Connect Wireless Apple CarPlay

1, Long press switch button(different car with different switch button,check from installation diagram) to enter AutoSmartLink system main menu as below:

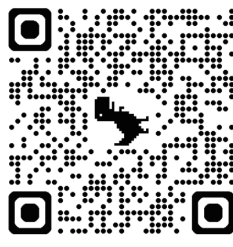


2, Then turn ON Wi-Fi from iPhone's settings,you will find option of " WiFi-AP-***** ",but DO NO need connect it, and DON'T connect any other network.

Turn ON Bluetooth, find and click " AutoSmartLink ", then according below steps get wireless connection (Note: if " AutoSmartLink "shows connected,but didn't go to carplay,then click Setup ->Bluetooth -> Paired device -> WiFi CarPlay then iPhone will show Use CarPlay request)



3, After 5 sec, it will enter CarPlay screen automatically, then enjoying...



User Manual